



# JEFFERSON COUNTY DEPARTMENT OF HEALTH 2019

## ANNUAL REPORT







JEFFERSON COUNTY  
DEPARTMENT OF HEALTH

# Jefferson County Board of Health

January 1, 2019 - December 31, 2019



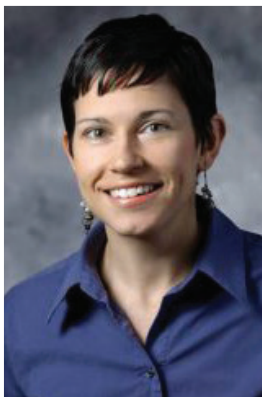
Joshua Miller, DO  
Chair Emeritus



Yocunda Clayton, MD  
Chair



Hernando Carter, MD



Sylvie Stacy, MD, MPH  
General Liability Committee/  
Investment Committee



Kenny Murray, MD, MPH  
Secretary



Commissioner Jimmie Stephens







# JEFFERSON COUNTY DEPARTMENT OF HEALTH 2019

## ANNUAL REPORT



A Message from the Health Officer.....1	Quality Improvement and Decision Support.....18
Disease Control.....2	Finance and Administration.....20
Environmental Health.....4	Public Health Advised Fund.....23
Clinical Services.....12	Board of Health Actions.....25
Population Health.....15	General Financial Information.....27
Dental Health.....17	Health Statistics.....29



## A Message From The Health Officer

In 2019, the Jefferson County Department of Health (JCDH) expanded and improved programs and services for the community, launched new initiatives and engaged the public to improve health in Jefferson County. The focus throughout the year has been stewarding our resources to meet the changing health needs of Jefferson County residents.

JCDH is actively working to prevent disease spread with new initiatives such as the “Getting to Zero” countywide strategic planning process which aims to reduce HIV transmission to zero. This year also saw the expansion of dental health services to include pregnant women, the establishment of a trail system fund to help leverage other funds to create new trails and greenways, and the launch of a pediatric metabolic clinic to reduce children’s risk of diabetes. JCDH also implemented a new interdisciplinary team focused on population health and health equity. By expanding services and launching new initiatives, JCDH is proactively advancing health and improving quality of life for all residents of Jefferson County.

The Environmental Health Division continues to protect our environment and protect residents from disease while providing customer service that is fast and convenient. Examples include providing online payments for permit renewals, increasing community members’ access to environmental information in various formats, and finding innovative ways to protect the environmental resources that help keep our county healthy, vibrant and sustainable.

In 2019, JCDH completed a comprehensive assessment of health and quality of life in Jefferson County. This assessment provides a robust picture of health outcomes and the underlying factors and experiences that influence health for Jefferson County residents. Using the data from this assessment, JCDH is developing a *Community Health Improvement Plan for Jefferson County* to launch in 2020. This plan will help guide work and community partnerships to improve the health of everyone who lives, learns, works, worships or plays in Jefferson County.

Each year inevitably brings at least one new public health challenge. In 2019, Jefferson County was declared a hepatitis A outbreak county, part of a larger disease outbreak that spread into Alabama from nearby states. JCDH responded to this threat by proactively offering free hepatitis A vaccine to at-risk Jefferson County residents at its clinics, and by taking vaccine to high-risk groups in our community.

Smoking remains the largest contributor to preventable deaths in Jefferson County. Smoking prevention and cessation continued to be a health focus in 2019. JCDH helped lead the effort to create a new Health District in Birmingham’s Southside that includes the UAB campus, JCDH and several other health facilities. This Health District will extend smoke-free space to include streets and sidewalks as well as other public spaces not included in the Birmingham smoke-free ordinance.

These are just a few examples of how JCDH is working to improve health and quality of life for Jefferson County residents through expanded programs, innovation and new initiatives, improved customer service, health assessment, and policy change. This Annual Report includes additional examples, as well as other information about the work of JCDH and the state of health in Jefferson County.

Mark E. Wilson, MD  
Health Officer

# Disease Control

The Disease Control Division of the Jefferson County Department of Health (JCDH) works to prevent the spread of infectious disease in Jefferson County and consists of the subdivisions: Specialty Clinics, Sexually Transmitted Disease, Tuberculosis, and Prevention and Epidemiology. In 2019, the Sexually Transmitted Disease (STD) Clinic, one of JCDH's Specialty Clinics, was renamed the Sexual Health Clinic to decrease perceived stigma associated with attending the clinic; furthermore, the new name better captures the breadth of the services provided by the clinic, including treatment of sexually transmitted infections and Hepatitis C, and the provision of Pre-Exposure Prophylaxis (PrEP) to prevent HIV. The PrEP program at JCDH has continued to grow since its inception in 2017. All JCDH Sexual Health Clinic providers are receiving training to prescribe PrEP. Additionally, the Sexual Health Clinic provides testing and treatment for Hepatitis C; and, during 2019, two people were cured of chronic Hepatitis C and four are awaiting confirmation of cure through either JCDH's Sexual Health or Adult Health Clinics.

The Sexually Transmitted Diseases (STD) subdivision operates a robust team to track the spread of STDs, help patients receive evaluation and treatment, and perform contact tracing. The STD program served over 3,400 persons with chlamydia, gonorrhea, syphilis or HIV in 2019. An increase in syphilis in females led to an increase in the number of cases of congenital syphilis locally, as well as statewide. Currently, JCDH is collaborating with the Alabama Department of Public Health's STD Medical Advisory Council to update state-level syphilis screening guidelines for pregnant women. JCDH also conducts active community outreach to reduce transmission of STDs by interfacing with schools, churches, colleges and community organizations. In 2019, JCDH staff engaged in five STD screenings, 13 presentations and 42 health fairs resulting in approximately 6,400 interactions with community members.



Educating the public on disease control in partnership with WBRC.

JCDH is one of only two sites in Alabama offering the Yellow Fever vaccine in the midst of the ongoing national vaccine shortage. JCDH's International Travel Clinic, a Specialty Clinic, administered 1,086 doses of yellow fever vaccine to its patients, and 322 doses were provided for patients of other clinics in 2019.

The Tuberculosis (TB) subdivision protects the health of Jefferson County residents by rendering services to prevent and treat TB. JCDH aims to reduce the county's TB burden through education, evaluation and provision of therapy for residents with suspected or confirmed latent or active TB. JCDH followed 18 active tuberculosis cases and observed an increase in the number of foreign-borne cases from five (28%) in 2018 to 11 (61%) in 2019. Directly observed therapy continued to be used to ensure completion of medication treatment and reduce resistance of the TB organism to antibiotic therapy. Throughout the year, JCDH identified and screened over 110 TB contacts. JCDH participated in 24 community outreach events with a focus on providing TB education for vulnerable populations.



# Disease Control



Proper handwashing is key to disease prevention.

Prevention and Epidemiology engaged with community partners in investigating notifiable diseases, providing education on disease prevention and mitigation strategies reducing the burden of circulating disease, and performing numerous outbreak investigations. Prevention and Epidemiology staff conducted over 1,000 investigations of notifiable diseases and conditions and investigated 180 complaints or disease outbreaks. As Jefferson County has been in the midst of a Hepatitis A outbreak that began in spring 2019, JCDH partnered with local care facilities serving vulnerable populations and local incarceration facilities to deliver Hepatitis A vaccine.



Educating students on "Stopping the Spread of Germs" at Hudson K-8 in May 2019.



# Environmental Health

The JCDH Environmental Health Division includes the Food and Lodging Protection, Community Environmental Protection, Community Assessment, Air and Radiation Protection, and Emergency Preparedness and Response subdivisions. Environmental Health enforces public health regulations through inspection, permitting and complaint investigation. Draft revisions to Jefferson County's Communal Living Regulations for future public comment, online emphasis on programs and training for the public, the beginning design of a searchable air pollution database for county residents, and expansion of the online permit payment system were implemented to improve efficiency and use of taxpayer dollars.



The High Ore Line Trail Extension provides a place to enjoy the beauty of Jefferson County.

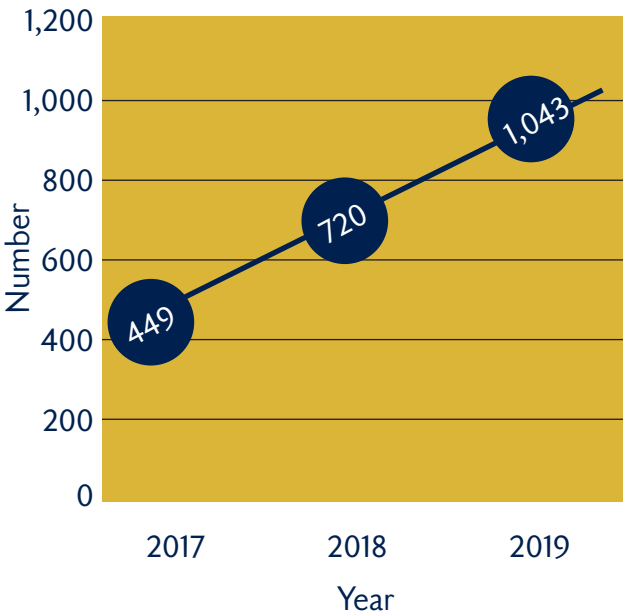
Food and Lodging Protection (FLP) regulates food establishments (including food service establishments, food stores, and the food service functions of schools, hospitals, jails, lodging facilities, communal living facilities, and childcare centers). Each of these entities is governed by unique regulations; FLP permits, inspects, investigates complaints and enforces action at each of these. FLP provides guidance to each industry on sanitary operation and compliance with associated regulations, in addition to offering consumers food safety information and providing a food safety education program.

With the option to use the online permit fee payment process extended beyond September 30, 2019, there was a 31% increase in the number of online permit renewals, a 24% increase in online invoice payments, and a 27% increase in the gross dollar amount of online payments between 2018 and 2019.

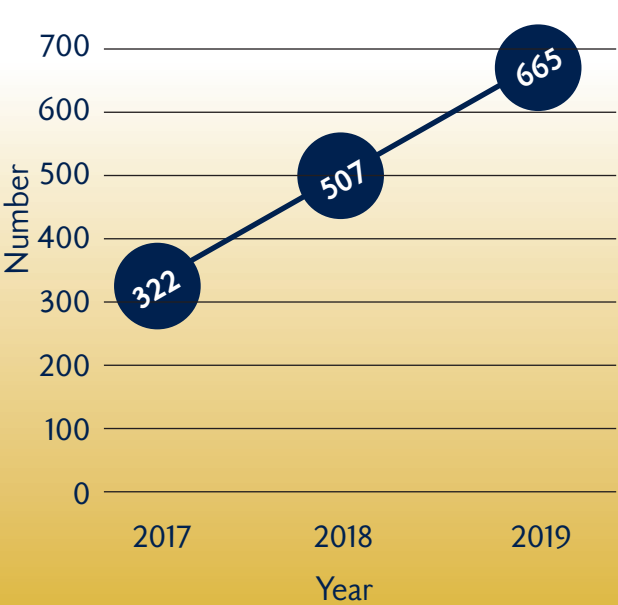
YEAR	NUMBER OF PERMITS PAID ONLINE	PERCENT CHANGE	NUMBER OF INVOICES PAID ONLINE	PERCENT CHANGE	DOLLARS PAID ONLINE (GROSS)	PERCENT CHANGE
2017	449		322		\$207,000	
2018	720	60%	507	58%	\$337,200	63%
2019	1,043	45%	665	31%	\$463,053	37%
	Change between 2017-2019	132%	Change between 2017-2019	106%	Change between 2017-2019	124%

# Environmental Health

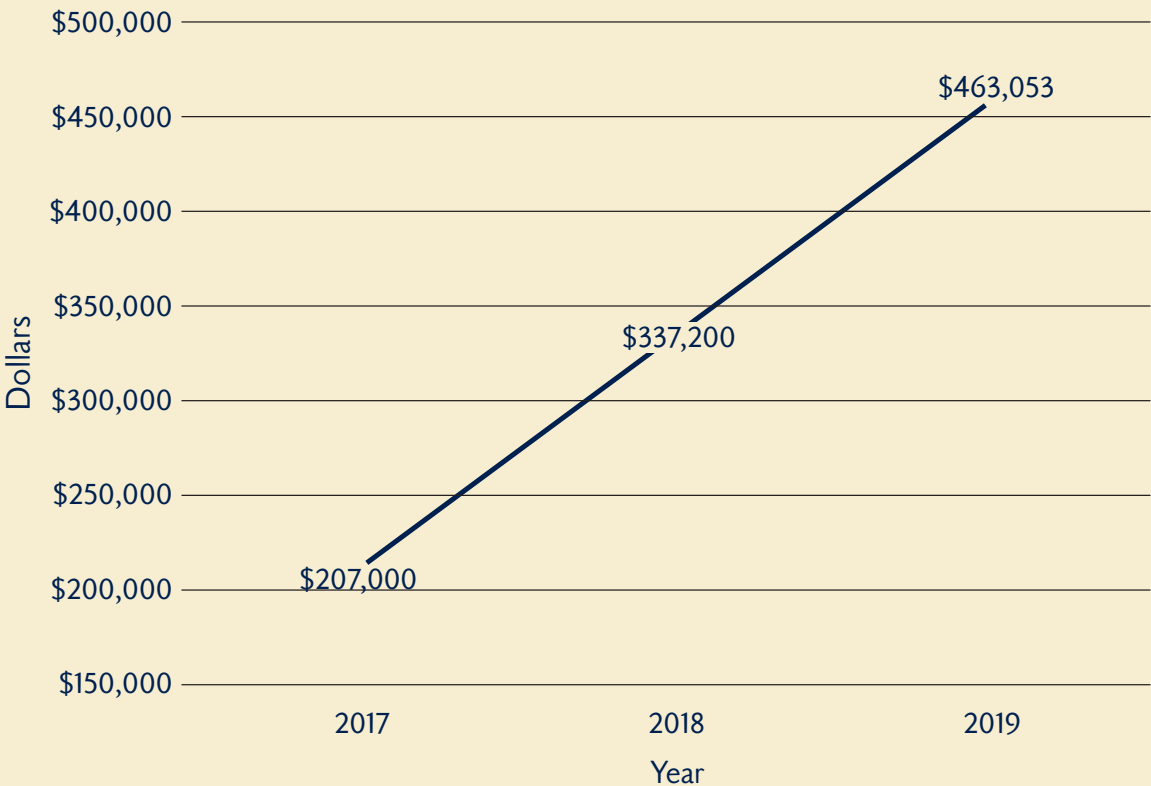
## Number of Food and Lodging Permits Renewed Online



## Number of Food and Lodging Invoices Renewed Online



## Change in Food and Lodging Permit Renewal Monies Collected Online



# Environmental Health

## 2019 Food and Lodging Protection Activities

Each new food, lodging and childcare facility in Jefferson County is required to submit a detailed layout and design architectural plan for review and approval by FLP. During 2019, FLP procured a large format scanner to digitize these architectural plans and drawings. Digitizing plans following review allows JCDH to preserve history and provide potential documentation for future food establishments.

Inspections	
INSPECTION TYPE	NUMBER
Food	12,819
Childcare	175
Lodging (hotel/motel)	112
Communal Living	47
Camp	11
<b>Total All Inspections</b>	<b>13,164</b>

Complaint Investigations	
Total Number of Complaints Received	802
Total Number of Complaint Investigations	1,256

Permits	
FOOD PERMITS/ESTABLISHMENTS	NUMBER
Food Service Establishment	1,777
Limited Food Service	797
Limited Retail Food Store	325
Retail Food Store	213
Childcare Center (food permit)	214
Temporary Food Service Vendor	199
Public School Lunchroom	158
Mobile Food Vendor	186
Bar and Lounge	148
Ballpark Concession Stand	147
Food Processor	73
Nursing Home Kitchen	50
Senior Feeding Site	33
Private School Lunchroom	24
Other Institutional Kitchen	17
Hospital Kitchen	14
Charitable Non-Permitted Food Establishment	9
Jail and Prison Food Service	6
Summer Feeding Site	4
<b>Total Permitted (Food)</b>	<b>4,394</b>
OTHER FACILITY PERMITS BY TYPE	
Childcare	287
Hotel/Motel	131
Communal Living	57
Camp	13
<b>Total Other Facilities Permitted</b>	<b>488</b>
<b>Total Permitted Facilities</b>	<b>4,882</b>



# Environmental Health

## Food Safety Education

FOOD HANDLER TRAINING BY TRAINING TYPE	NUMBER
Online	12,279
Classroom (at JCDH)	1,307
Satellite (offsite)	566
<b>Total</b>	<b>14,152</b>

## Certified Manager Course

Number of Participants	375
Number of Certificates Issued	207
Number of Classes/exams	20

## Other Services

Total Temporary Food Events (permitted and exempt)	83
--	----

Community Environmental Protection (CEP) includes the Onsite Sewage, Public Swimming Pool, Community Sanitation, Rabies Control, Vector Control, Body Art and Watershed Protection sections. Each section completes inspections, conducts investigations and provides education on environmental health issues affecting residents of Jefferson County.

Investigation of environmental concerns and inspection of select facilities allows JCDH to monitor compliance with regulations; however, education is a proactive means of preventing health concerns and improving environmental health conditions. The Onsite Sewage section staff participated in the Alabama Department of Public Health's "Soil and Site Evaluator" training for Environmental Health Specialists. During 2019, CEP conducted a certification course for community pool/spa operators; through this training, 98% of the participants received certification. The Watershed Protection section provided training on erosion and sedimentation control and stormwater standard operation procedures for 33 builders and municipal officers. Additional community education was provided through pamphlets entitled, "How to Keep Our Water Clean," "Protecting Streams and Storm Drains from Pet Waste Pollution" and "Proper Disposal of Pesticides."



Inspection of a community pool

# Environmental Health

JCDH and the Valley Creek Cleanup Committee held the 9th Biannual Cleanup on Valley Creek Watershed on September 25-28, 2019. Over 5.27 tons of trash and debris and 6.1 tons of tires were removed from the roadside and creek by JCDH staff and 229 volunteers during this event.

JCDH and the Storm Water Management Authority, Inc. conducted a Household Hazardous Waste Collection Day on April 10, 2019. JCDH staff and 77 volunteers received 135,097 pounds of waste from 942 participants.



The 2019 Valley Creek Cleanup collected 5.27 tons of trash.



Tires removed during the 2019 Valley Creek Cleanup



Household Hazardous Waste Collection Day location in Fairfield

## 2019 Community Environmental Protection Activities

Permits	
PERMIT TYPE	NUMBER
Body Art Facility	52
Mobile Home Park	54
Solid Waste Transfer Station	2
<b>Total</b>	<b>108</b>

Complaints	
COMPLAINT TYPE	NUMBER
Sanitation	967
Animal Exposure	918
Onsite Sewage Disposal	303
Water Quality	333
<b>Total</b>	<b>2,521</b>

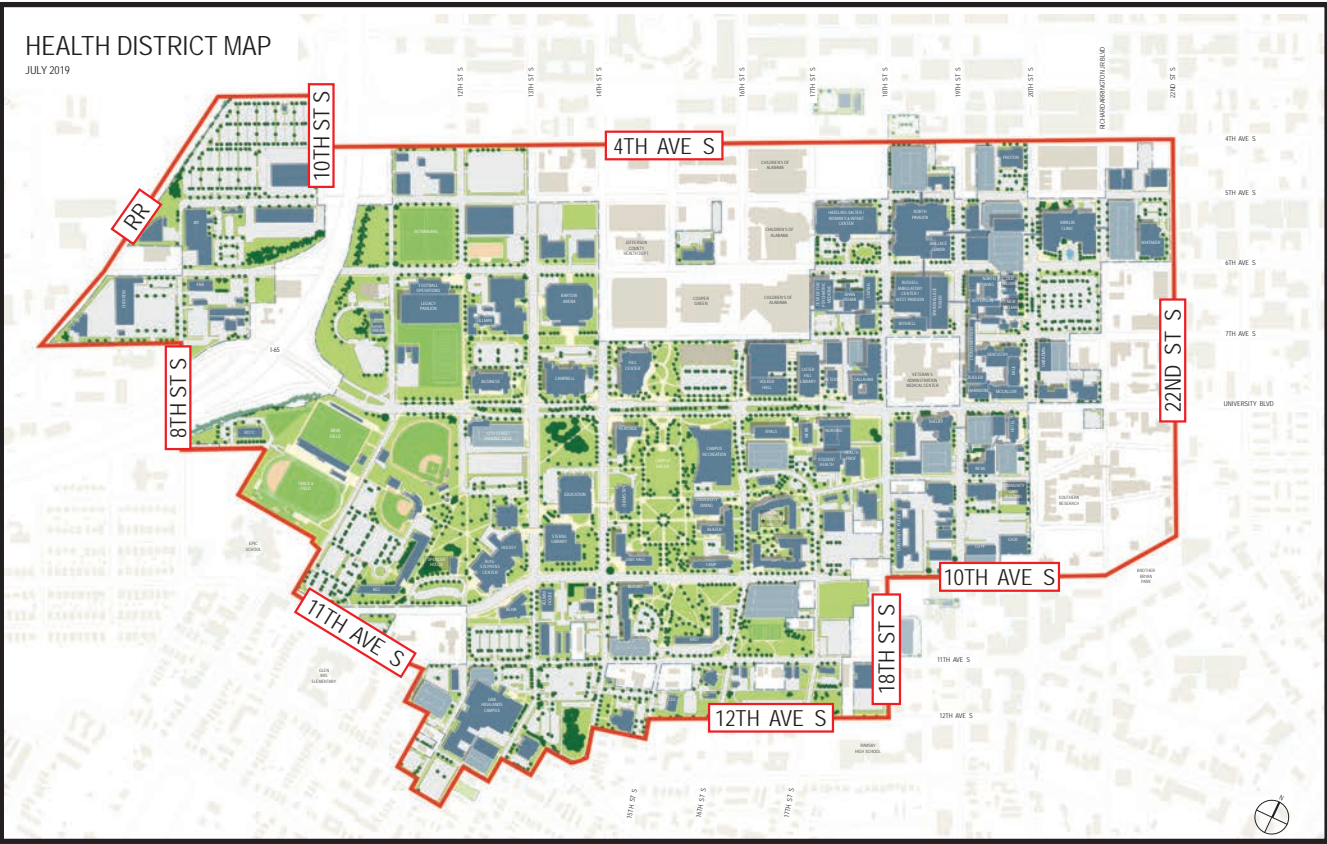


# Environmental Health

Community Assessment includes the Tobacco Prevention and Control and Health Impact Assessment programs. To assist with tobacco prevention and control, a presentation and pledge for students to commit to growing up healthy and safe was developed for Red Ribbon Week, a national drug awareness campaign, and presented to 363 Grantswood Elementary School students. In addition, Community Assessment provided educational materials and tobacco cessation resources at the Great American Smokeout event held at the University of Alabama at Birmingham (UAB).

Community Assessment continues to actively participate in partnerships to advance population health, including the Jefferson County Health Action Partnership and Safe and Healthy Homewood Coalition. A major accomplishment during 2019 was the adoption of a City of Birmingham resolution establishing a smoke-free Health District surrounding many local hospitals and prohibiting smoking within the Health District's boundaries, including city streets and sidewalks. Community Assessment joined with Children's of Alabama, Cooper Green Mercy Health

Inspections	
INSPECTION TYPE	NUMBER
Pool/Spa	2,400
Onsite Sewage Disposal	2,207
Stormwater Samples	504
Industrial Stormwater Runoff	510
Garbage Hauler	216
Mobile Home Park	108
School and Jail	110
Body Art Facility	95
Solid Waste Facility	15
Transfer Station	4
<b>Total</b>	<b>6,169</b>





# Environmental Health

Services, Southern Research Institute, the University of Alabama at Birmingham and the Birmingham VA Medical Center in establishing the Health District.

As youth access to and use of vaping products has become an increasing health concern, Community Assessment conducted an assessment of the availability of vaping and tobacco products in retail outlets within Jefferson County. A representative sample of the county's 937 tobacco product retailers was evaluated using the *Standardized Tobacco Assessment for Retail Settings (STARS)* and *Standardized Tobacco Assessment for Retail Settings: Vape Shops (vSTARS)* tools. The results of this assessment are being used for targeted marketing of tobacco prevention and cessation educational materials.

Air and Radiation Protection consists of the Air Pollution Control, Air Monitoring and Radiological Protection programs. The Air Pollution Control program regulates industrial and area sources of emissions through compliance, inspection and enforcement. The Air Pollution Control program controls open burning, responds to air-related compliance issues, conducts industrial facility surveillance, and regulates sources of asbestos and area sources of pollution such as gasoline stations, gasoline tanker trucks and dry cleaners. The Air Pollution Control program also issues daily air quality forecasts, including air quality alerts.

Illegal open burning is an important health-related issue addressed by Environmental Health's Community Assessment and Air and Radiation Protection subdivisions. After investigating 715 open burning complaints received from the community, JCDH emailed surveys assessing knowledge of open burning regulations to the 52 fire department chiefs serving Jefferson County. Staff from Community Assessment and the Air and Radiation Protection also met with respondents from the Fultondale, Midfield and Minor Fire Departments to gain a deeper understanding of the open burning problem and receive input regarding possible solutions.

## 2019 Air and Radiation Protection Activities

Air Pollution Protection Activities	
ACTIVITY	NUMBER
Complaint Responses	268
Permits Issued (all types)	220
Industrial Source Inspections	78
Open Burning Authorizations Issued	26

# Environmental Health

The Air Monitoring program operates a network of air monitoring stations throughout Jefferson County to assess ambient air quality. Air quality data is used to determine compliance with the Environmental Protection Agency's (EPA) National Ambient Air Quality Standards (NAAQS) for criteria pollutants. The Air and Radiation Protection Radiological Protection program evaluates operating procedures and inspects x-ray and tanning equipment and facilities within Jefferson County.



McAdory air monitoring site

## Radiological Protection Activities

ACTIVITY	NUMBER
Tanning Bed Inspections	193
X-Ray Tube Inspections	127

Emergency Preparedness and Response (EP) uses an "all hazards" approach to prepare for potential public health threats in Jefferson County. To better prepare for the full spectrum of emergencies and disasters, EP participated in many different exercises throughout the year.

On October 9, 2019, JCDH conducted its first drive-thru vaccination clinic. Using a pandemic influenza scenario, JCDH administered 90 seasonal flu vaccines to exercise participants. This exercise tested JCDH's capacity to administer mass vaccinations for critical infrastructure personnel such as police and health care workers. Members of the Jefferson County Healthcare Coalition (HCC), a collaborative network of organizations focusing on health care emergency planning and response, represented the critical infrastructure component in this exercise.



The Influenza Mass Vaccination Drive-thru Clinic tested Jefferson County's response capacity.

To test the Serious Infectious Disease Network, JCDH participated in a multi-state, full-scale Ebola exercise within Federal Emergency Management Agency (FEMA) Region IV on November 4-5, 2019. The scenario tested was one where a person presenting to a local hospital with Ebola symptoms received medical care and was later transferred to an out-of-state treatment center. As part of this exercise, JCDH participated in multiple planning and logistics conference calls with local, state and federal partners, and transported simulated blood samples to the state laboratory for testing.

To assist with improving the health care system's ability to plan and respond to emergencies, funding was provided for the following Jefferson County HCC planning and training activities:

- Fit Tester Respiratory Protection Training
- Critical Incident Stress Management Training
- Coalition Surge Test simulating the evacuation of two hospitals within Jefferson County to identify gaps in surge planning
- Annual Hazard Vulnerability Assessment and Gap Analysis
- Update of the HCC Preparedness and Response Plans

# Clinical Services

The Clinical Services Division of the Jefferson County Department of Health (JCDH) provides quality patient care using team-based process improvement to increase satisfaction, enhance efficiency and improve health outcomes. During the 2019 Fiscal Year (October 1, 2018 – September 30, 2019), Clinical Services recorded more than 64,500 patient visits for adult and pediatric primary care, preventive services, vaccination, chronic disease management, pharmacotherapy, family planning, nutrition and social services. Primary care services were offered to adults and children at three locations: Central, Eastern and Western Health Centers.

Primary Care Patient Visits	
PROGRAM AREA	NUMBER
Child Health	36,550
Adult Health	8,991
Family Planning	18,971



Contraceptives are provided in the JCDH Family Planning clinics.

The Family Planning program at JCDH offers a broad range of contraceptive methods on a voluntary and confidential basis. Participants are provided contraceptive education and counseling, breast and cervical cancer screening, sexually transmitted illness (STI) and human immunodeficiency virus (HIV) testing, and referrals as needed. During 2019, JCDH began offering intrauterine devices (IUD) as a long-acting contraceptive option. JCDH partnered with the University of Alabama at Birmingham Department of Obstetrics and Gynecology to provide training for JCDH staff on the insertion and removal of IUDs.

In October 2018, JCDH implemented a new electronic medical record (EMR) with a robust patient portal. The portal allows patients to view lab results, request appointments, communicate with JCDH health care staff, request prescription refills, and pay bills. Patient engagement has improved with approximately 40% of JCDH patients registered for the portal.

In June 2019, JCDH implemented Phreesia®, an automated patient intake platform that enables patients to be engaged in their care and improves registration and intake efficiency. Approximately 63% of JCDH's patients benefitted from Phreesia® by using mobile and in-office registration devices to update demographic and insurance information, enter clinical data and complete screening questionnaires.



Phreesia® pads help patients provide information for registration and to support care.

With the Phreesia® software, JCDH is better able to track check-in volumes by location, improve staff accountability, monitor the average length of the check-in process and assess patient satisfaction. On average, approximately 2,900 patient satisfaction surveys are completed each month, with 87.5% of patients reporting satisfaction with the current technology. Since implementation in June, more than 21,600 emails and 20,300 text messages have been sent to patients through Phreesia®.

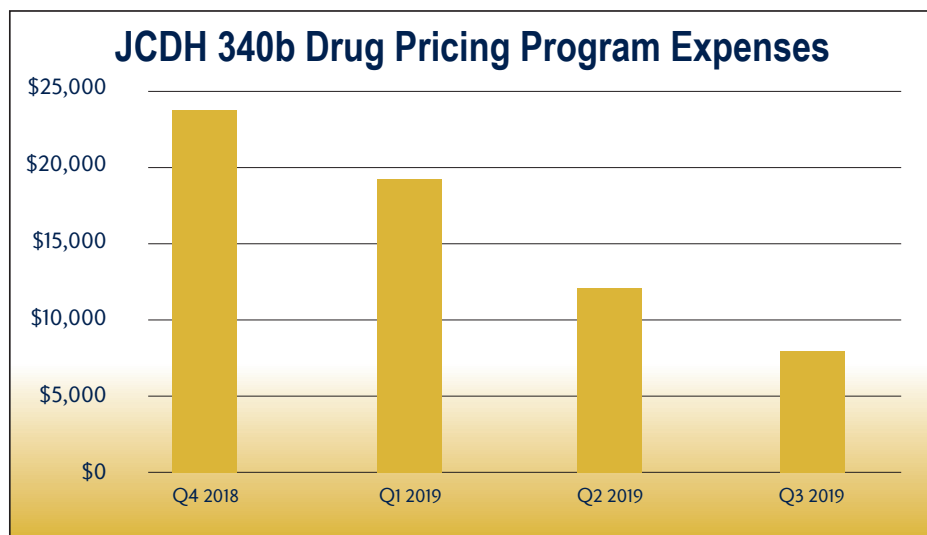


Following the launch of the Call Center in October 2018, clerical staff have received more than 148,000 calls. Clinical Services' nursing staff provided education and triage services to more than 70,000 individuals via telephone. In addition to meeting the needs of JCDH patients, the Call Center serves as the primary source of communication and education during events such as back-to-school immunizations, infectious disease outbreaks, and influenza vaccination.

Call Center staff provide education and schedule appointments for JCDH Health Clinics.



# Clinical Services



Pharmacy Services at JCDH expanded its footprint in 2019 to improve operations, fulfill legal requirements, maximize security, and minimize errors, omissions and unsafe practices. Pharmacy Services implemented multiple tools to systematically maintain medication inventory, store medications as directed on the manufacturer's label, allow electronic monitoring of off-site inventory and controls, and ensure medication inventory records are current,

accurate and comply with legal requirements. JCDH continues to participate in the federal 340b Drug Pricing Program, a U.S. federal government program that requires pharmaceutical manufacturers to provide outpatient medications to eligible health care organizations at significantly reduced prices. The Family Planning program and select Disease Control programs are included in the 340b Drug Pricing Program. By providing medication management oversight, directly monitoring the medication ordering process and actively identifying the most cost effective medications, the pharmacy budget for Family Planning had an estimated cost savings of \$37,720.



Interpretation provided at Fiesta in September 2019.

JCDH continues to ensure individuals with Limited English Proficiency and those with sensory impairment have access to meaningful communication and an equal opportunity to participate in JCDH services, activities, programs and other benefits. During the 2019 Fiscal Year, JCDH's Public Health Language Workers (PHLWs) assisted in more than 45,400 encounters in an array of languages including Spanish, Q'eqchi', Vietnamese, Arabic, Russian, Portuguese, Luganda, Mandarin, Cantonese, Korean and French. Five JCDH PHLWs are nationally certified to provide simultaneous interpreting. In addition to on-site PHLWs, JCDH partners with two agencies to increase language access to the deaf community through on-site sign language interpretation and American Sign Language video interpreting.

The Social Services subdivision, housed within Central, Eastern and Western Health Centers and the Sexual Health Clinic, provides clients access to medical care, health system navigation and medical monitoring, while addressing needs for food, employment, clothing, transportation, counseling, education and other needs.

Social Services participates in collaborative efforts to strengthen individuals and families, improve birth outcomes, promote early education, enhance the safety of children in foster care, prevent the spread of infectious diseases and decrease opioid overdose deaths.

Social Services participates in collaborative efforts to strengthen individuals and families, improve birth outcomes, promote early education, enhance the safety of children in foster care, prevent the spread of infectious diseases and decrease opioid overdose deaths.



Sign language interpretation during a Food Handler training class.

# Clinical Services

In 2019, the Social Services team documented 8,895 patient encounters, delivered 21 educational presentations and trained 58 attendees on Mandatory Reporting for Healthcare Providers and Workplace Stress and Wellness. Team members managed 360 referrals for high-risk dental needs, childhood lead poisoning, failed newborn screenings, adverse pregnancy outcomes or frequent emergency department usage.



JCDH's mobile WIC Clinic is ready to serve the community!

The Special Supplemental Nutrition Program for Women, Infants, and Children (WIC) provides nutrition education and healthy foods to low-income families at Central, Eastern, Morris and Western Health Centers and at the UAB Women and Infants Center. WIC staff educate participants on the importance of breastfeeding, as well as the benefits of eating healthy food. During Fiscal Year 2019, an average of 14,828 WIC participants received individualized nutrition education each month.

On July 1, 2019, the WIC program in Jefferson County began issuing supplemental foods via an electronic benefit transfer (EBT) card known in Alabama as eWIC. The use of eWIC assures participants only purchase WIC-approved foods, and it allows nutrition staff to easily make changes to food prescriptions without an office visit. Approved WIC participants can complete online education through WICHealth.org and receive benefits via “phone issuance.” The WIC program continued preparations for launching a mobile WIC Clinic aimed to reach eligible families closer to where they live.

JCDH is committed to protecting the confidentiality of patients and ensures appropriate safeguards to protect all patient health information. During 2019, Release of Information (ROI) responded to more than 4,700 medical record requests. Records are released in paper and electronic formats according to applicable laws. Over the year, ROI released more than 106,000 paper documents.

To comply with federal regulations, Clinical Laboratory Improvement Amendments of 1988 (CLIA) conducts recertification surveys of clinical laboratories every two years. In 2019, JCDH laboratories received a score of 100% on its CLIA recertification, maintaining its perfect compliance record for the past 24 years.

JCDH laboratories must balance efficiency and patient care to provide large quantities of accurate data. JCDH laboratories collected and processed a yearly total of 390,511 labs. A total of 194,776 in-house tests were performed by testing staff. JCDH has over 75 instruments interfaced with the EMR. Four reference laboratories interface with the EMR to enable faster response times for results and eliminate manual data entry.

JCDH improved the efficiency and quality of its laboratory services by adding a phlebotomy workstation, staffed by LabCorp, at each health center. Shifting the collection of lab specimens to LabCorp allows JCDH staff to concentrate on other patient care activities. During 2019, JCDH implemented an electronic documentation process for additional lab and infection control activities, reducing the amount of paper used and providing a permanent database for quality control reporting and record keeping.



A JCDH staff member performing a lab test

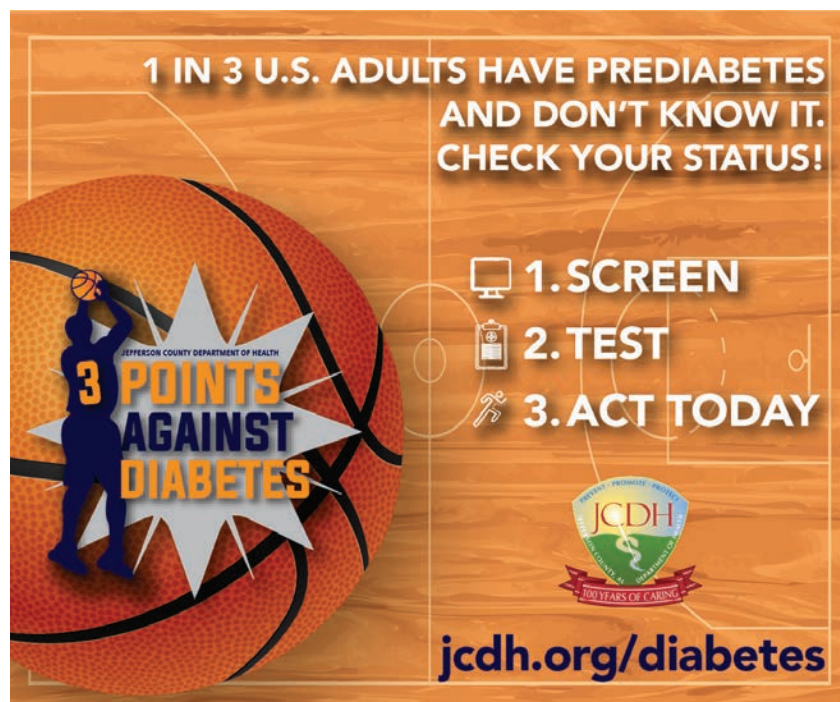
# Population Health

2019 brought the introduction of the Jefferson County Department of Health (JCDH) Population Health Interdisciplinary Team (PHIT). This team brings together managers from across JCDH to evaluate and recommend interventions to address health issues affecting residents of Jefferson County to JCDH's executive leadership. This year's activities focused on organizing the group and defining its roles within the JCDH Strategic Plan, the Jefferson County Health Action Partnership and existing programs and initiatives at JCDH. A deep dive into tobacco and vaping was undertaken by PHIT to determine the approach JCDH should use to reduce tobacco/vaping utilization rates. PHIT conducted a review of science, policy, data, financial impact, media approaches, regulation and EVALI (E-cigarette and Vaping Associated Lung Illness). PHIT will issue its final report with tobacco/vaping recommendations in 2020.



JCDH is excited to be a recipient of an Overdose Data to Action (OD2A) grant as a sub-recipient of the Alabama Department of Public Health's (ADPH) grant from the Centers for Disease Control and Prevention (CDC). This grant will establish the infrastructure for collecting real-time data on fatal and non-fatal drug overdoses in Jefferson County and inform a Rapid Response Team that will respond, via an emergency preparedness approach, to a neighborhood or community experiencing a number of overdoses. The Rapid Response Team will provide treatment resources and evaluation for illness associated with substance use disorders, immunizations and overdose rescue medication.

JCDH is leading a statewide effort to improve the treatment of pregnant women with substance use disorders. Many of these women lack adequate assessment of their substance use, do not have adequate treatment resources, and may be involved in the legal or child welfare systems. JCDH partnered with UAB and Clarus Consulting Group to lead a strategic planning process in late 2019 which created a report to be issued in 2020 containing recommendations to change the care and treatment pregnant women with substance use disorders receive in Jefferson County and Alabama.



JCDH received grant funding from ADPH to improve awareness of prediabetes and diabetes and available support services. Sixteen health coaches were trained through this funding to deliver a nationally recognized diabetes prevention curriculum, PreventT2, in May 2019. The training prompted the launch of this program for JCDH employees, led by JCDH health coaches. JCDH continues to receive grant funding through ADPH to increase breast, cervical and colon cancer screening rates in Jefferson County.



# Population Health

A comprehensive, patient-centered program, From Day One (FDO), was designed and implemented by JCDH to educate and support expectant mothers from the first trimester of pregnancy through their child's first year of life. FDO aims to improve pregnancy and birth outcomes for women and infants in Jefferson County by promoting early access to prenatal care and connecting families to beneficial community resources. Through educational enrichment and support of FDO partners, parents are empowered to provide excellent infant and child care in a safe home environment. Currently, 154 clients participate in the FDO program, and, as of November 3, 2019, 32 new mothers have graduated.

FDO conducts Baby Safety Showers quarterly for its clients. Six Baby Safety Showers have served 90 maternity clients and 128 family members. Written information in Spanish, along with Simultaneous Interpretation, are provided for Spanish-speaking clients throughout the Baby Safety Shower.

Additional work performed under the Population Health umbrella includes the Addiction and Recovery Alliance, the Nurse Family Partnership, the Let's Get Down 35211 High Blood Pressure Management Program and JCDH's naloxone initiatives, all of which are described elsewhere in this report.



FDO Baby Safety Showers provide new mothers with supplies to improve newborn safety.



Infant CPR training is provided during FDO Baby Safety Showers.

# Dental Health

Oral health is essential for overall health. Caries (dental decay) is reported as the most common chronic childhood disease in America, and oral health disparities exist for certain populations. JCDH Dental Health pursues health equity by providing preventative care and treatment services to reduce the risk factors and disease burdens of preventable disease throughout Jefferson County.

Dental Health is committed to protecting the overall health of the county's underserved and uninsured individuals through increased access to oral health services. In 2019, Dental Health provided 11,623 patient visits for dental preventative and treatment services for 5,642 qualifying Jefferson County residents at JCDH community-based clinics: Central, Eastern and Western Dental Clinics.

Poor oral health is linked to adverse birth outcomes such as pre-term birth and low birthweight. With a common goal of improving birth outcomes in Jefferson County, a new collaboration was formed between JCDH Dental Health and the From Day One (FDO) program (a health promotion program for women during pregnancy and for their child during the first year of life). New FDO enrollees without a dental home are now eligible for referral to JCDH Dental Clinics. Oral health education was additionally incorporated as a component of the Baby Safety Showers conducted as a part of FDO.

Through an ongoing collaboration with Project Homeless Connect and One Roof, dental care was provided at no charge to people in the local homeless population. Ongoing collaborations with Cooper Green Mercy Health Service's Primary Care and JCDH Adult Health Clinics allow primary care patients with diabetes to be referred for oral health services in JCDH Dental Clinics.

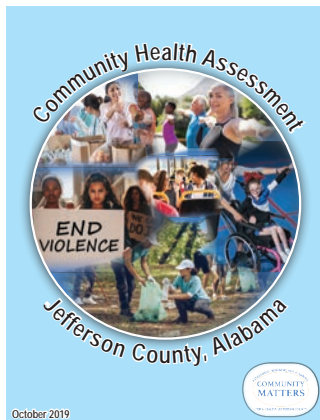
Dental Health promoted oral health awareness and disease prevention by providing health education at schools and community events across Jefferson County. A goal of these outreach efforts was to promote the importance of establishing a dental home and following up with regular dental visits to prevent and treat oral disease. Participants received valuable information to enable them to make healthy choices related to oral and overall health.

Protecting oral and overall health for the future requires a well-trained workforce. Dental Health provided lectures on dentistry and public health, and partnered with the UAB School of Dentistry, Wallace State Community College and Lawson State Community College to deliver clinical rotations and education in the field of public health practice for dental, dental hygiene, and dental assisting students.



Reviewing x-rays with patients improves understanding of the dental care plan.

# Quality Improvement and Decision Support



2019 Community Health Assessment.

The Quality Improvement and Decision Support (QIDS) Division provides assessment, planning and evaluation services for internal and external operations of the Jefferson County Department of Health (JCDH). QIDS leads JCDH's quality improvement and performance management programs and is a key contributor to JCDH's Public Health Accreditation Board (PHAB) ongoing accreditation.

During 2019, QIDS analyzed and interpreted qualitative and quantitative data provided by over 1,500 Jefferson County residents and local public health system agencies, as well as vital records and other health-related data retrieved from public data repositories to develop the *2019 Community Health Assessment for Jefferson County, Alabama*. From these analyses, and with community input, five strategic issues were identified for improving health in Jefferson County. These five strategic issues are:

- Control Gun Violence and Improve Community Safety
- Provide a Timely, Safe, Equitable and Well-maintained Public Transportation System
- Improve Mental Health Care Access and Utilization
- Decrease Obesity
- Advance Health Equity through Equitable Policies and Access to Resources and Services.

These strategic issues serve as the framework for Jefferson County's five-year strategic plan for health, the *2020-2024 Community Health Improvement Plan for Jefferson County, Alabama*. Additionally during 2019, QIDS completed the final evaluation of the *2014-2019 Community Health Improvement Plan for Jefferson County, Alabama* through which JCDH and its partners accomplished over 96% of the plan's 175 tactics.

QIDS and other divisions within JCDH continue to support the Jefferson County Health Action Partnership (HAP), a coalition of over 100 organizations collaborating to make Jefferson County, Alabama a healthier place to live, learn, work, worship and play. The HAP's Optimizing Healthcare Access Priority



Group, co-chaired by JCDH's Khalilah Brown, MD and Darlene Traffanstedt, MD, received administrative support through QIDS. This Priority Group's Maternal and Child Health Roundtable identified collaborative opportunities for reducing Jefferson County's high infant mortality rate during 2019. Jefferson County Health Officer, Mark Wilson, MD, led a Safety Net Leaders group comprised of representatives from the Federally Qualified Health Centers operating in Jefferson County, UAB Health System, Cooper Green Mercy Health Services, Project Access, local hospitals, JCDH and Hope Health Center. This group explored improving care coordination for low-income and uninsured county residents. The Optimizing Healthcare Access Priority Group's Joint Nurse Practitioner Residency Working Group graduated its second cohort of two residents in October 2019 and received funding for training six nurse practitioner residents in the third cohort. Additional guidance and support were provided by QIDS for activities of the HAP's Promoting Healthy Lifestyles, Built Environment, Transportation and Safety, and Improving Mental Health Priority Groups.

QIDS led multiple tactics teams in implementing the *2017-2021 Jefferson County Department of Health Strategic Plan*. Included in this work were the development of shared language and knowledge of the root causes of health inequities informing the health equity training program to be provided in 2020 for JCDH employees. QIDS also continued development of JCDH's performance management system.

Quality improvement activities conducted in 2019 included ongoing data analysis informing improvements in the New Employee Orientation Program, enhancing community awareness of sexually transmitted infection screening and treatment resources, and evaluating the impact of pre-completed documentation for mass flu vaccination on throughput during a point-of-dispensing (POD) exercise.



# Quality Improvement and Decision Support

With support from the Community Foundation of Greater Birmingham and in collaboration with Connection Health, Greater Shiloh Missionary Baptist Church, Mount Canaan Full Gospel Church and New Hope Baptist Church, QIDS developed and launched the Let's Get Down 35211: A High Blood Pressure Management Program. Let's Get Down 35211 is designed to reduce uncontrolled high blood pressure in residents of the 35211 zip code through a 12-week lifestyle modification program. The community-based program provides eligible participants with peer support from trained Community Health Workers and medication adherence support. During 2019, nine Community Health Workers were trained to conduct blood pressure screenings and implement the program's intervention. Participant enrollment in Let's Get Down 35211 began in November 2019.



The South East Lake Collective, a partnership between JCDH's QIDS, Promoting Empowerment and Enrichment Resources, Inc., Urban Collective, the National Hook Up of Black Women and the Robert Woods Johnson Foundation's Culture of Health Leaders program, provided life skills and job preparation training to select women in the East Lake area through the Women's Worth Life Readiness Project. Training provided included computer skills, financial management, and medical billing and coding to support participant self-sufficiency.



Women's Worth Life Readiness Project classes provide women with a variety of skills to support self-sufficiency.

# Finance and Administration

The Finance and Administration Division of the Jefferson County Department of Health (JCDH) consists of General Services, Human Resources, Management Information Systems, Public Relations, Vital Records, Accounting, Central Billing and Payroll.

General Services is responsible for the facilities management of 16 JCDH properties including renovation, remodeling, maintenance, custodial services, safety and security, landscaping and upkeep of grounds. General Services also includes the operations and activities of the Print Shop and Records Management.



JCDH electric vehicles help reduce air pollution.

Key projects completed or initiated by General Services in 2019 include repair of the Guy M. Tate Building plaza and support structure, renovation of a recreational vehicle for use as mobile service unit, completion of leasing agreements for three Nissan® electric vehicles and installation of two dual charging stations, replacement of the Guy M. Tate Building cooling towers, renovation of the Guy M. Tate Building's



Renovation of the Guy M. Tate Building will improve service access for the public.

Lobby, Conference Room, and operational spaces occupied by Management Information Systems and Vital Records, and architectural design for the renovation of Eastern Health Center in 2020.



Having fun while learning at Team Experience Day

During 2019, 41 full-time employees and 20 interns were hired by Human Resources. Additionally, 21 retirement applications were processed. The annual Employee Team Building Experience was conducted in October 2019 to promote employee cross-collaboration and team building skill development. Employees participated in various customer service training sessions and competed in several team building exercises during the Employee Team Building Experience.

Human Resources implemented an applicant tracking system enabling more proactive recruitment of talent from the community. The system includes a candidate tracker tool for

documenting individuals with an interest in open positions at JCDH. Additionally, a relocation assistance program for select positions was developed and enhancements were made to the organization's benefit program to attract skilled talent.

Flexible work schedules were implemented in 2019 as a benefit to staff and the Jefferson County community. A wider range of working hours allows JCDH to provide services and resources to the community during a larger portion of the day.



## Finance and Administration

The Risk Management program of Human Resources continuously considers the safety of staff, clients and partners. Safe Room signs were added to improve the visibility of weather safe rooms. Additionally, anti-harassment training was conducted, and the JCDH Continuity of Operations Plan was updated.

A top priority for Management Information Systems (MIS) in 2019 was cybersecurity training. JCDH partnered with the State of Alabama Office of Information Technology to implement Threat Advice®, a cybersecurity training platform. Over the course of 2019, JCDH's cybersecurity training resulted in the steady decline of phishing simulation fail rates from 13.1% in May 2019 to 5.8% in November 2019.

MIS finalized the implementation of a new electronic medical record during 2019. Over 150 laptop computers were deployed to clinic staff to enable mobility in JCDH's clinics. A new vaccine inventory management system with barcode readers was implemented to enhance efficiency and streamline vaccine administration and regulatory reporting.

Also in 2019, MIS enhanced its Geographical Information System (GIS) infrastructure and mapping assets and iOS applications, implemented new lab and dental quality control systems, and launched a new internal employee-centric website.

Public Relations made several impressive strides using digital and traditional media during 2019. Digital media initiatives included official JCDH Facebook and Twitter accounts, a new, outdoor, full-color multimedia marquee located at the Guy M. Tate Building, and JCDH's interactive website. Public Relations also incorporated original content for its digital media presence by creating in-house videos with JCDH employees as subject matter experts.

The JCDH Facebook page has over 1,300 "likes" and 1,400 "followers" Some of JCDH's most popular videos are those featuring the Director of Disease Control sharing valuable information from various locations, the announcement of the renaming of the Sexually Transmitted Disease Clinic to the Sexual Health Clinic, and the on-site video displayed at the Magic City Classic promoting Hepatitis A vaccination and HIV Pre Exposure Prophylaxis (PrEP). In addition, many non-video posts on JCDH's Facebook page reached audiences with public health-related information.

JCDH has 306 Twitter "followers" on @JCDHTweets, another resource for public health information. One of the most popular tweets of 2019 was the announcement of the Jefferson County Health Officer's Annual State of Health in Jefferson County Address in April with over 1,300 impressions.

Throughout the year, as part of an ongoing partnership with WVTM 13 News and Weather, health segments on various topics were delivered to the viewing audience by



Jefferson County's Health Officer collaborates with the Jefferson County Sheriff on improving community safety.



# Finance and Administration

the Jefferson County Health Officer, Mark Wilson, MD. These segments air primarily following the weekend morning newscasts, but may also be aired during other time slots. This partnership allows JCDH to collaborate with Jefferson County's Sheriff, Mark Pettway, on commercials and public safety messaging. To combat Jefferson County's vaping epidemic, a football-themed anti-vaping commercial was developed and aired on Friday nights during WVTM's live high school football broadcasts.

JCDH's website continues to provide information on JCDH programs and services and allows JCDH website visitors to make inquiries. During 2019, over 500 website messages were received and fielded by Public Relations with inquiries from the public for Environmental Health, Clinical Services, Administration, Vital Records and Disease Control.

Vital Records issued over 85,000 birth, death, marriage and divorce certificates in 2019.

2019 Vital Record Certificates Issued	
CERTIFICATE TYPE	NUMBER OF CERTIFICATES
Death Certificate	49,526
Birth Certificate	34,291
Marriage Certificate	1,404
Divorce Certificate	420

# Public Health Advised Fund

The Jefferson County Department of Health maintains a funding mechanism through the Public Health Advised Fund (PHAF) of the Community Foundation of Greater Birmingham to support community health initiatives within Jefferson County. During 2019, \$1,087,871 in grant funding was distributed or approved for distribution for community-based projects led by local organizations including:

- A grant to the UAB School of Nursing for continuation of the Nurse Family Partnership, a nationally recognized home-visiting model demonstrated to improve prenatal health, birth outcomes and child development, as well as reduce adverse events in childhood.

- A grant to the Crisis Center to continue operation of the Recovery Resource Center in assisting individuals and families impacted by addiction navigate the substance abuse treatment system.



Funding for technical upgrades improved processing of human donor milk.

- Support for the Mother's Milk Bank of Alabama enabling operational expansion, including technical upgrades for increasing human donor breastmilk processing. Donor breastmilk supports the nutritional needs of high-risk infants in area hospital neonatal intensive care units.

- Grants to Impact Family Counseling, the Comprehensive Addiction in Pregnancy Program at UAB and the UAB School of Nursing to promote infant and child well-being through purchase of car seats and "Pack and Plays" for safe sleeping.

- A grant to Birthwell Partners for the implementation and evaluation of a project providing doula support to high-risk pregnant women with Medicaid to reduce preterm birth, maternal complications related to pregnancy and delivery, and infant mortality.



- A grant to Alabama Regional Medical Services (ARMS) to expand access to primary care in the North Birmingham area.

Ribbon cutting for Alabama Regional Medical Services' (ARMS) Northern Health Center in North Birmingham.

# Public Health Advised Fund

- A grant to the Medical Foundation of Jefferson County to support continuation of Project Access, a program providing specialty care access for the uninsured and underinsured.



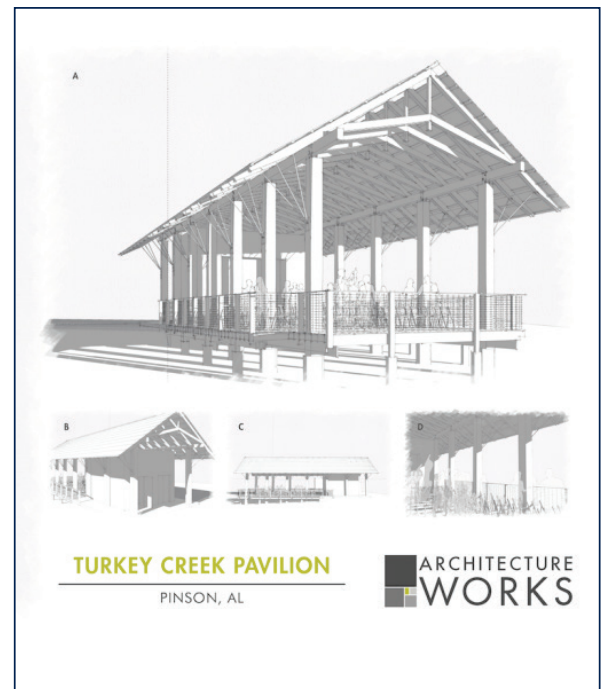
Albert Schweitzer Fellows learning about health literacy.

- A grant to the Alabama Albert Schweitzer Fellowship to provide additional training and support project implementation.

- A grant to Chocolate Milk Mommies for providing parenting education and breastfeeding support to teen parents at several local high schools.

- A grant to Cahaba Valley Health Care for the provision of dental care to uninsured Jefferson County residents.

- A grant to the Southern Environmental Center at Birmingham Southern College for the addition of an Americans with Disabilities Act (ADA) compliant classroom pavilion and permeable parking at the Turkey Creek Nature Preserve.







Joshua Miller, DO  
Chair Emeritus



Yocunda Clayton, MD  
Chair



Hernando Carter, MD



Sylvie Stacy, MD, MPH  
General Liability Claims Committee/  
Investment Committee



Kenny Murray, MD, MPH  
Secretary



Commissioner Jimmie Stephens

## Board of Health Actions for 2019

The Jefferson County Board of Health (Board), the governing body of the Jefferson County Department of Health (JCDH), is comprised of six members: five physicians elected by the Jefferson County Medical Society and the President of the Jefferson County Commission. The Board approves JCDH's annual budget and all contracts. The Board is authorized to revise or adopt certain public health regulations, endorse policies and legislation promoting health, and take other actions advancing public health. The Board receives regular updates from the Jefferson County Health Officer, Mark Wilson, MD, presentations from JCDH staff on programs and quality improvement activities, and occasional presentations from external health partners.

Among the 2019 actions of the Board of Health were:

- A resolution to adopt Title V Operating Permit Fees for calendar year 2018, payable in 2019, at an increased rate of \$67.16 per ton of regulated pollution. These fees, required by the Environmental Protection Agency (EPA), fund JCDH's direct and indirect costs related to air pollution monitoring and control such as labor, equipment, and administrative expenses for the larger industrial sources of air pollution emissions issued Title V Operating Permits by JCDH.
- A resolution to provide hepatitis A vaccine free of charge to at-risk individuals who otherwise may have difficulty accessing the vaccine, to transfer hepatitis A vaccine stock to partner organizations to assist JCDH in vaccinating at-risk individuals, and to provide personal incentives to encourage certain at-risk individuals to engage in hepatitis A prevention education due to the hepatitis A outbreak in North Alabama that subsequently spread to Jefferson County.
- Approval of a contract with an author to provide professional writing services for a book on the history of JCDH.
- A resolution to allow JCDH to offer a moving and relocation lump-sum payment for new employees who are recruited for hard-to-fill positions and meet certain criteria outlined in the JCDH policy.
- A resolution to transfer funds to the Jefferson County Commission for the purpose of re-establishing the entrance to historic Camp Coleman and developing a canoe launch and/or picnic area in unincorporated Jefferson County near Trussville, Alabama.
- A resolution authorizing JCDH to transfer funds to the Public Health Advised Fund, managed by the Community Foundation of Greater Birmingham, to support the Recovery Resource Center (RRC) of Jefferson County and the Nurse-Family Partnership (NFP) to further the Board's public health work. The RRC provides a place where people with addiction or their families can receive in-person information, assessment, referral and peer navigation to direct individuals to the most appropriate addiction treatment. The NFP is a visiting nurse program for first-time, low-income pregnant women designed to reduce maternal and infant mortality and strengthen families.

# Board of Health Actions for 2019

- A resolution to transfer the Morris Health Center (MHC) property to the City of Morris. JCDH closed its operations at MHC with the exception of the Women, Infants, and Children (WIC) Program, which will also be closing in the near future.
- Approval of a resolution to establish a fund with the Freshwater Land Trust for trails, green spaces, and environmental protection projects that can be used to leverage funding from local private and public funding sources and draw down major federal funding for this type of work.
- Approval of contracts in support of JCDH hosting the Substance Use in Pregnancy Summit on November 20-21, 2019 to address ways to improve outcomes for pregnant women with substance use disorder and their infants. Over sixty Alabama decision-makers convened during this event to discuss chemical endangerment laws and determine ways to provide better alternatives for law enforcement and judges in dealing with women who use substances while pregnant. Recommendations from the Summit were later presented to the Governor's Study Group on Criminal Justice Policy.

# 2019 GENERAL FINANCIAL INFORMATION

## Revenues (General Fund - \$45,461,822)

### **1. Ad Valorem Tax Revenue (\$7,447,997 - 16% of General Fund Revenues)**

Alabama Act 77-231 provides that the County (and municipalities within the County) shall pay to the Board of Health annually a sum not less than 2% or more than 6% of all ad valorem taxes collected within the County excluding ad valorem taxes collected for the State of Alabama and all Boards of Education located in the County. These funds are forwarded to the Jefferson County Department of Health as the taxes are collected.

### **2. Sales Tax Revenue (\$22,827,212 - 50% of General Fund Revenues)**

JCDH receives approximately one-fifth of every one cent of Jefferson County sales tax.

### **3. State & Federal Contracts (\$2,020,961 - 4% of General Fund Revenues)**

These are primarily dollars received from the Alabama Department of Public Health (ADPH) resulting from contracts or subcontracts to administer specific public health responsibilities for Alabama Public Health Area 4, Jefferson County. Examples include selected developing community and educational programs and monitoring activity in nationally identified public health focus areas such as Maternal/Child Health, Family Planning, Immunization, Tuberculosis, Sexually Transmitted Diseases and Hepatitis.

### **4. Clinical Health Care Revenue (\$6,329,537 - 14% of General Fund Revenues)**

This category represents the amount of reimbursement received for all clinic-related services provided by JCDH. These services include pediatric and adult primary care, family planning and dental care. Using the Federal Poverty Guidelines, JCDH offers reduced service fees for patients meeting financial and residential guidelines. Approximately 13.5% of JCDH's reimbursement is obtained from patients, 80% from Medicaid, 6% from Blue Cross, and the remaining 0.5% from all other payers combined (e.g., Medicare, etc.).

### **5. Environmental Health Services (\$3,080,628 - 7% of General Fund Revenues)**

This category represents reimbursement received locally for environmental health services. State law allows fees to be charged for many of the services provided by the Environmental Health Division such as restaurant inspections, septic system plans and inspections, air pollution permit fees, open burning permits, radiological equipment inspections and food handler training.

### **6. Other Revenue (\$3,755,487 - 8% of General Fund Revenues)**

This category is primarily reimbursement received for indirect costs (administration and building overhead) associated with federal grants and contracts such as the Special Supplemental Nutrition Program for Women, Infants and Children (WIC) and Air Pollution. Also included are allowable fines levied for violation of public health laws (e.g., air pollution violations), rental fees, parking lot and meter receipts and fees received for copies of vital records. This category also includes earnings from cash and investments. All JCDH investments are based on a Board of Health approved Investment Policy that strictly follows state and county guidelines.



## Expenditures (General Fund - \$47,395,777)

Expenditures are generally classified by major public health program with administrative costs and the Capital Fund transfer separately identified. General Fund expenditures for Fiscal Year 2019 included:

Category	Expenditure	Percent of General Fund Budget
Salaries and Benefits	\$34,095,715	72%
Materials and Supplies	\$7,266,944	15%
Contract Services	\$4,425,008	9%
Uncollectable Debt	\$408,110	1%
Capital Fund Transfers	\$1,200,000	3%
<b>Total</b>	<b>\$47,395,777</b>	<b>100%</b>

JCDH also has fourteen Special Revenue Funds totaling \$6,031,815. Special Revenue Funding is received from federal awards passed through JCDH and designated for activities related to immunization, nutrition, storm water, emergency preparedness and air pollution. These funds are operated in accordance with the funding requirements of special grants and appropriations.

# Jefferson County Health Statistics, 2018\*

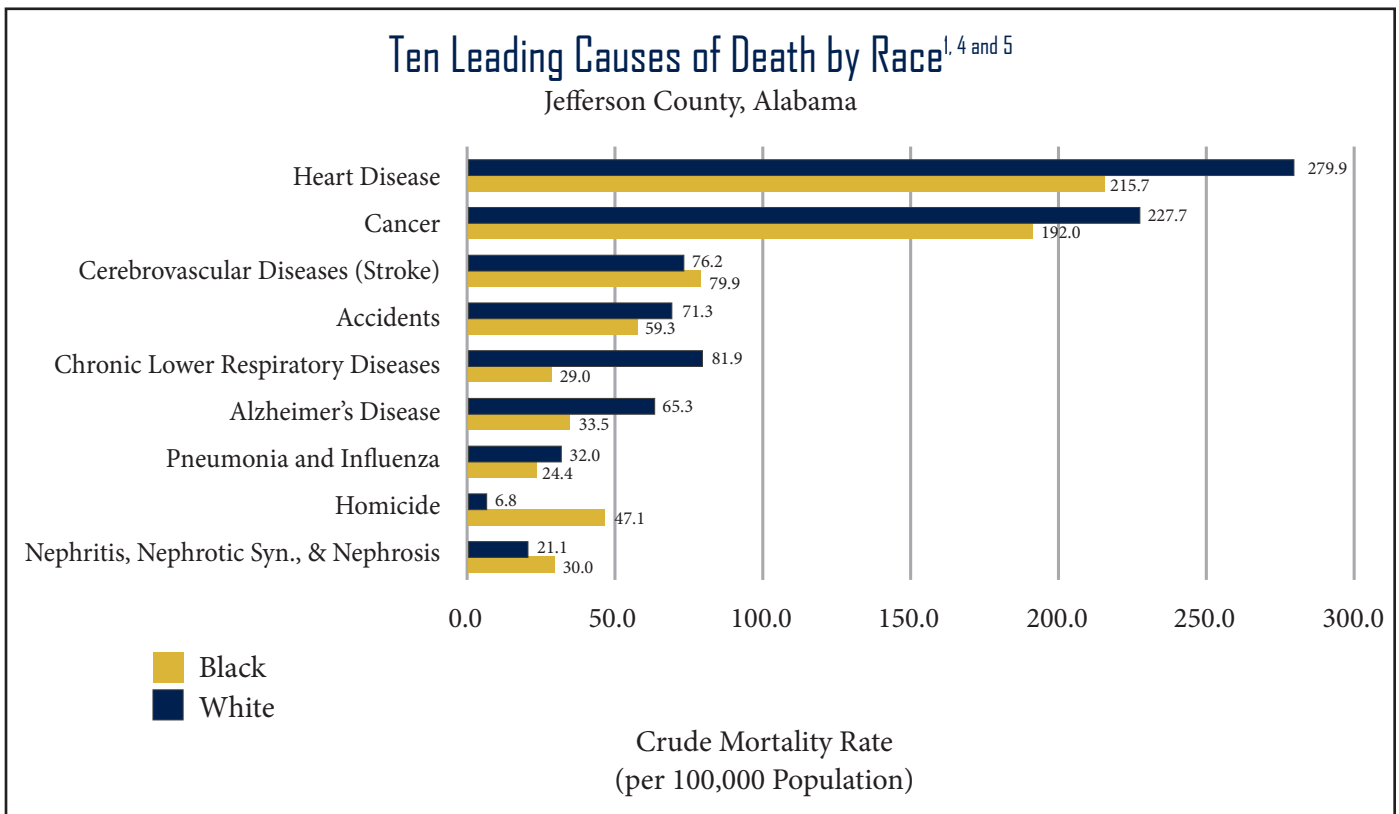
Jefferson County's Population By Age (2018 Census Bureau Estimates)	Age	Residents
	Birth - 14 years	125,069
	15 - 24 years	82,308
	25 - 64 years	347,223
	65 years and older	104,700
	<b>Total Population</b>	<b>659,300</b>

Maternal and Child Health, 2018 (number and rate or percent)				
	Number	Jefferson County <sup>1</sup>	Alabama <sup>1</sup>	United States <sup>3</sup>
Live Births (women ages 15 - 44)	8,416	61.9 per 1,000 women	60.8 per 1,000 women	59.1 per 1,000 women
Low Birthweight Births (<2,500 g)	784	9.3%	8.8%	8.3%
Very Low Birthweight Births (<1,500 g)	205	2.4%	1.9%	1.4%
Live Births to Teens (women ages 15 to 19)	494	24.0 per 1,000 women ages 15-19	25.2 per 1,000 women ages 15-19	17.4 per 1,000 women ages 15-19
Infant Mortality (Among live births)	69	8.2 per 1,000 live births	7.0 per 1,000 live births	5.4 per 1,000 live births
Note: All birthweight and infant mortality data is based on live births.				

Communicable Diseases, 2018 (rates per 100,000 population) <sup>3</sup>			
	Jefferson County	Alabama	United States
Chlamydia	776.9	583	539.9
Gonorrhea	408.4	261	179.1
Syphilis (primary & secondary)	17.0	9.8	10.8
Tuberculosis (TB)	2.7	1.9	2.8

# Jefferson County Health Statistics, 2018\*

Chronic Diseases, 2018 (Crude Mortality Rate per 100,000 Population) <sup>2</sup>		
	Jefferson County	Alabama
Heart Disease	243.7	275.6
Cancer	205.2	217.5
Stroke	75.5	63.2
Chronic Lower Respiratory Disease	56.1	73.5
Alzheimer's Disease	49.3	53.5



<sup>1</sup> Alabama Vital Records Database

<sup>2</sup> Alabama Department of Public Health (ADPH); [www.alabamapublichealth.gov/healthstats](http://www.alabamapublichealth.gov/healthstats)

<sup>3</sup> Centers for Disease Control and Prevention (CDC); [www.cdc.gov](http://www.cdc.gov)

<sup>4</sup> Rates are based on the 2018 Community Survey 1-year estimates for Jefferson County; [www.census.gov](http://www.census.gov)

<sup>5</sup> Accidental Deaths include deaths due to unintended drug overdose

\*2019 Selected Health Statistics will be available in the 2020 Annual Report





**JEFFERSON COUNTY  
DEPARTMENT OF HEALTH**